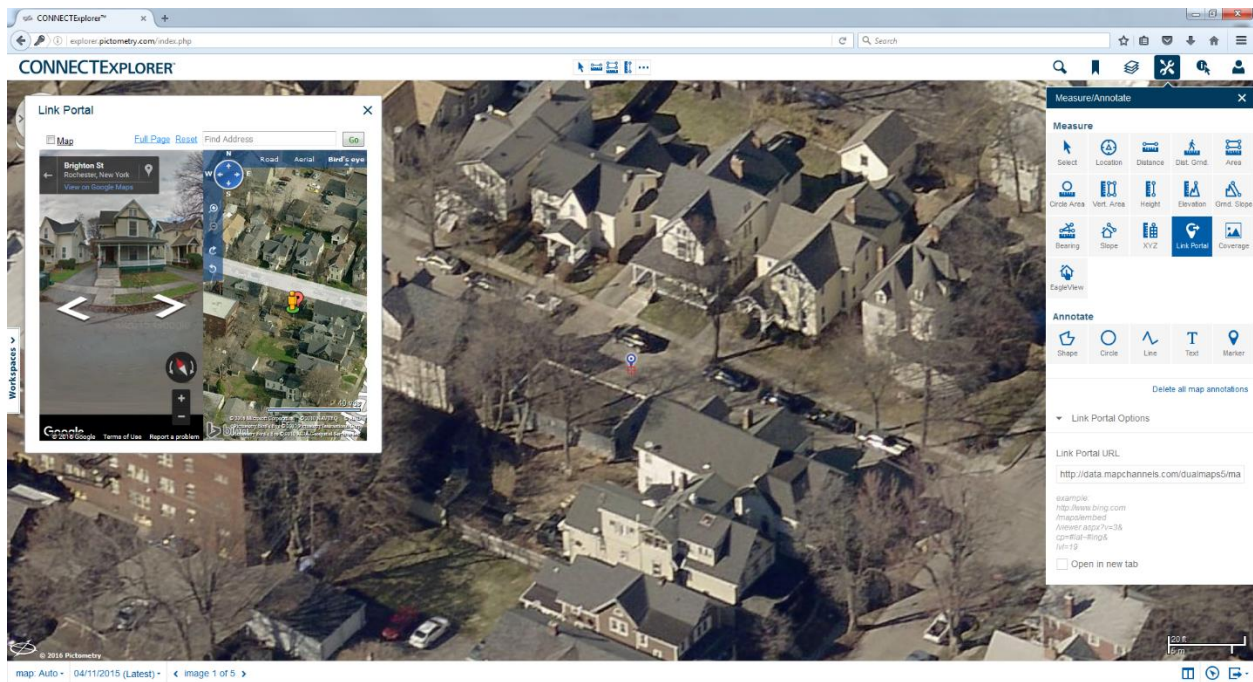


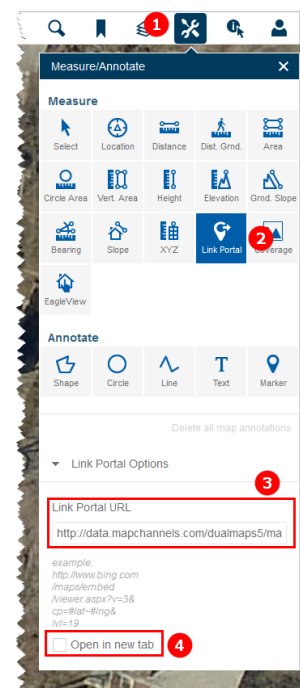
## Document Purpose

You can use the Link Portal tool to access freely available street-level imagery, such as Bing Streetside and Google Street View imagery, from within CONNECTExplorer. When the Link Portal tool is configured, clicking a location within the CONNECTExplorer image pane allows you to view an available street-level image of that location. This document will guide you through the process of setting up the Link Portal tool.



## Configuration Steps

1. Log in to CONNECTExplorer and open the **Measure/Annotate** pane by clicking the wrench icon in the toolbar.
2. Select the **Link Portal** tool.
3. In the **Link Portal URL** field, enter an applicable street-level URL, such as the example third-party URL listed below. An alternate URL might be provided to you by your administrator.
4. To access street-level imagery in a separate browser window, select the **Open in new tab** check box.
5. Click a location in the image pane and verify that street-level imagery appears for that location.
  - Be aware that street-level imagery is not captured or processed by Pictometry. Third-party street-level imagery providers are solely responsible for the date, accuracy, and quality of street-level imagery.



## Example Third-Party URL Provided by Bing and Google

---

Enter the following Bing Streetside Link Portal URL with no spaces or line breaks:

```
http://data.mapchannels.com/dualmaps5/map.htm?lat=#lat&lng=#lng&z=18&slat=#lat&slng=#lng&sh=-104.43&sp=4.03&sz=0.67&panel=s&gm=0&bm=2&mw=1&be=1&mv=1&md=0&mi=1
```

## Help and Support

---

For any technical questions regarding the Link Portal tool, please contact Customer Support by phone at 888-771-971x4260 or by email at [customersupport@pictometry.com](mailto:customersupport@pictometry.com).